

BIM IS NOT SOFTWARE

IN IT'S PLACE, WHERE SOFTWARE FITS IN THE FRAMEWORK

Machiel Odendaal

Technical Manager || Modena AEC | INF





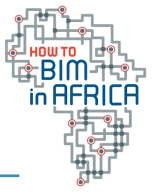
MACHIEL ODENDAAL

TECHNICAL MANAGER

MODENA



CONTENTS / AGENDA



- MYTH
- BIM IS NOT SOFTWARE
- THEN WHAT IS BIM?
- KEY TAKEAWAYS

KEY LEARNINGS

- THE DIFFERENCE BETWEEN BIM & SOFTWARE
- WHAT IS NEEDED TO IMPLEMENT BIM.
- HOW TO DETERMINE WHAT SOFTWARE CAN ASSIST WITH BIM.
- WHERE TO START WITH IMPLEMENTATION



01

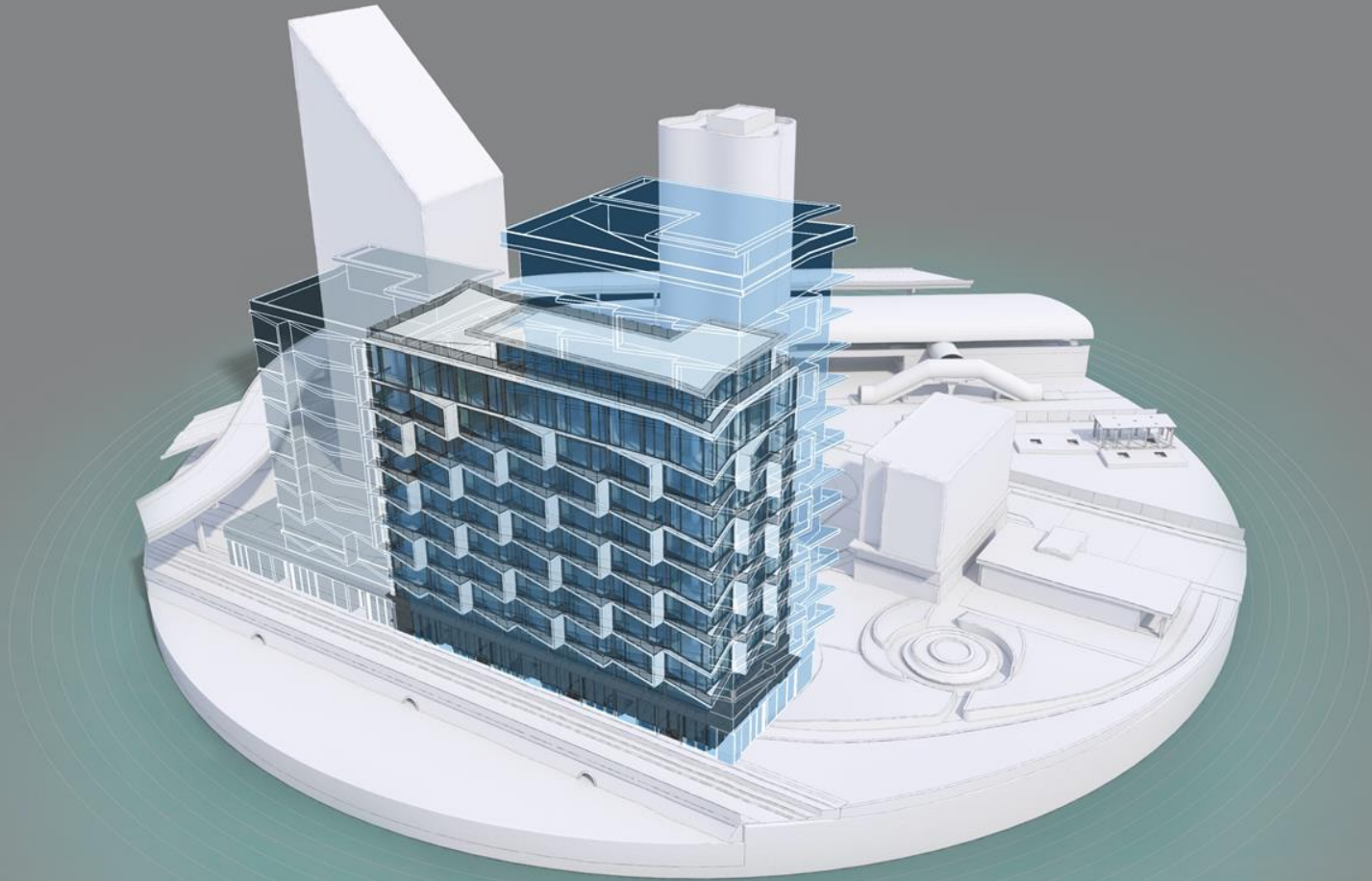
INTRODUCTION

Dispelling the myths and
understanding the real differences



Myth:

“BIM is Software”



Myth:
“BIM is Software”

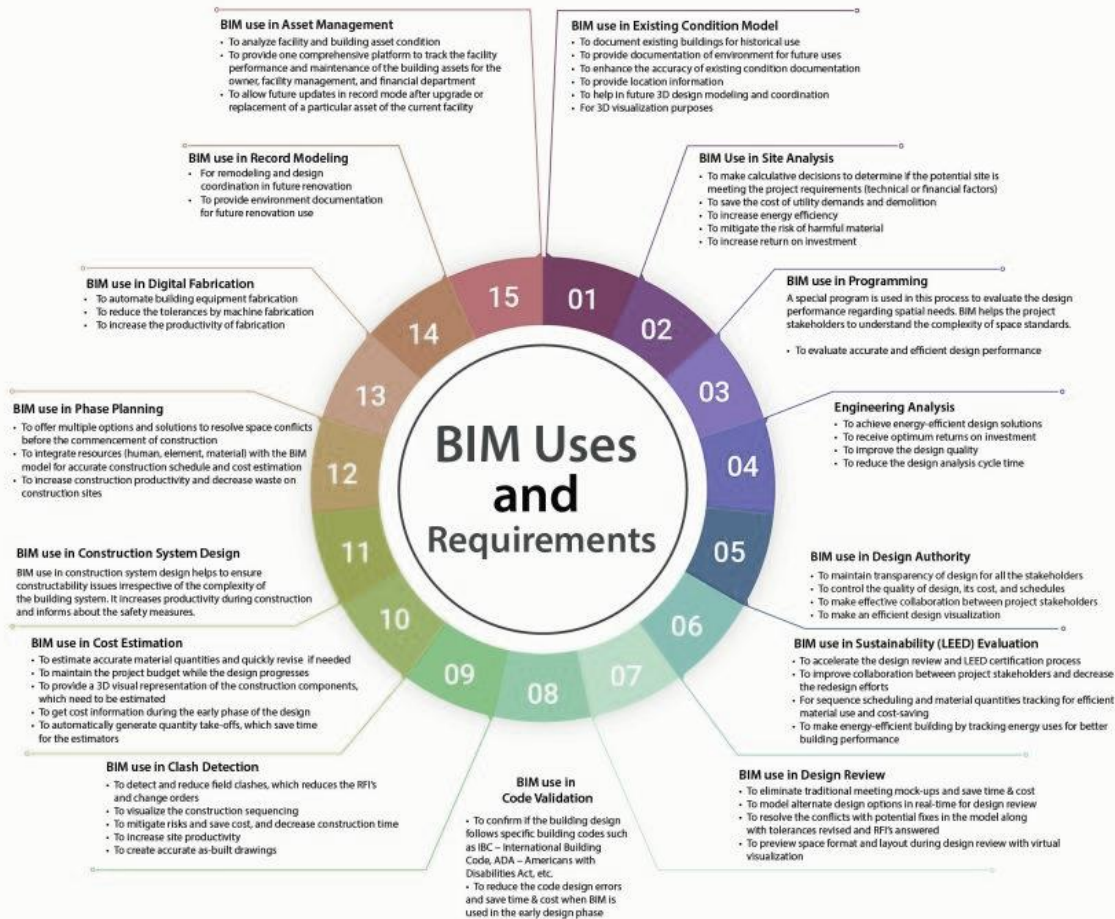
FAIL



02

BIM ≠ SOFTWARE











03

WHAT IS BIM?

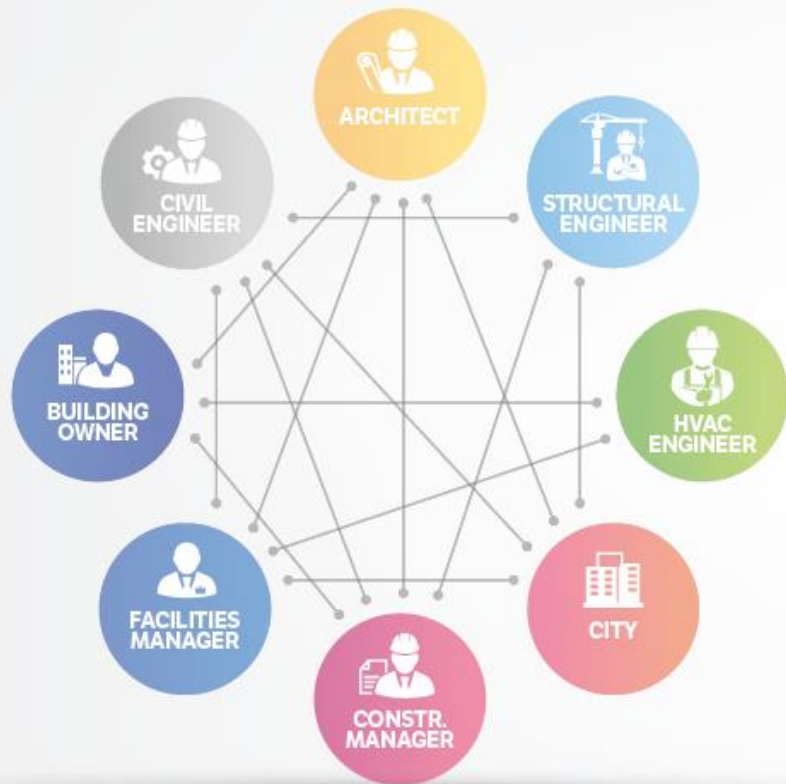




Think of:

“We get to build it twice”



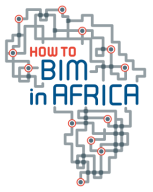




04

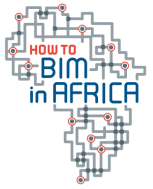
KEY TAKEAWAYS

SUMMARY



- BIM is a process, not a software
- BIM involves collaboration and data integration from various sources
- BIM software is a tool used to support the BIM process, but there is not just 1 tool.
- Implementing BIM requires a shift in mindset and a willingness to adopt new technologies and processes.
- To address economical, social and environmental needs, BIM as a process can guide the direction.

WHERE TO START WITH BIM



1. Set clear goals and objectives:
Before starting BIM, it's important to define clear goals and objectives for the project. This will help ensure that the BIM process is aligned with the project's requirements and that everyone involved is working towards the same goal.
2. Identify project stakeholders & their roles:
BIM is a collaborative process that involves input from various stakeholders within the construction project.
3. Choose the right BIM Software:
There are a variety of BIM software available; choosing the one that best aligns with the goals and objectives is critical.
4. Develop a BIM Execution Plan:
A BIM Execution Plan outlines how the BIM process will be executed on a project.
5. Train your Team:
Implement BIM requires a shift in the way teams work together, so it's important to provide adequate training and support for everyone involved. Team skills and knowledge plays a big part in the effectiveness of a BIM delivery.

Q & A





THANK
YOU

